

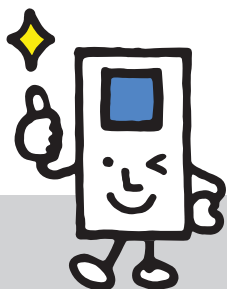


# KING JIM



## CATALOGUE 2022

Scan to  
Visit our website



[www.kingjim.com.vn](http://www.kingjim.com.vn)

## Introduction

**KING JIM CO., LTD.** was founded in 1927 in Japan. With 95 years in operating and developing, products of KING JIM have become a favourite and successful brand not only in Japan but also in other countries. Currently, KING JIM GROUP has three factories in Vietnam, Indonesia, Malaysia and two Trading Companies in Hong Kong, Shanghai and together with distributing systems all over the world.

With our management philosophy "Developing original products and creating a new culture to contribute to society" KING JIM always considers customer's development and satisfaction to be motivation to make many kinds of Eco-friendly products, safe for usage and brings to customers the confidence in quality, convenience, nice design and reasonable price.

 **KING JIM**

*The best solution for your office*







4/2007

**KING JIM (VIETNAM) CO., LTD.** was established in April, 2007 located in My Phuoc Industrial Park 3, Ben Cat Town, Binh Duong Province with area of approximately 60,000m<sup>2</sup> invested capital of 10,000,000 USD and workforce over 1000 employees, specialized in manufacturing Files and File component products to export and to sell in domestic market.

4/2012

In April 2012, King Jim (Vietnam) finished constructing the second factory for producing PP products.

11/2012

In November 2012, King Jim (Vietnam) launched the Representative Office in Ho Chi Minh City, with desire of market expansion and created possibilities in finding, coordinating and attracting potential customers in area.

5/2016

In May 2016, King Jim (Vietnam) opened the third factory.

12/2018

In December 2018, King Jim (Vietnam) launched label printer Tepra PRO SR-R170V Vietnamese version.

<b>Product</b>	<b>Page</b>
Introduction	01 - 02
Contents	03 - 04
King File Super Dotch DE	05
Instruction Of King File Super Dotch	06
King File Super Dotch	07 - 08
Lever Arch File	09 - 10
Clear File 176 - Clear File 1737	11
Clear File 186	12
Clear File 136 - Clear File 236	13
Clear File 236	14
Clear File TAFRU	15
Name Card Holder Name Card Holder SHOTDOCS	16
Clear File Refills	17
Sheet Protectors 11 Holes - Sheet Protectors 30 Holes	18
PP Ring File Simplease	19
PP D-Ring File Simplease	20
PP 3 D-Ring File Simplease PP Ring File Simplease	21
PP Ring File - PP D-Ring File	22
BF Series - PP Index Divider	23
Paper Index Divider	24
PP Pen Case FLYING COLORS - Carrying Case TEFIT Z File	25
TEFRENU Ring Note	26

Product	Page
TEFRENU Ring Note Pearl	27
Loose Leaf Paper	28
COMPACT NOTE Loose Leaf Paper of COMPACT NOTE	29
Amazing Box - New colors	30
Lezaface Series	31 - 32
Clip Board MAGFLAP	33
Clip Board	34
Clear Holder - Zipper Holder	35
SODA Transparent Masking Tape - KITTA Tape Boogie Board	36
OEM & Custom Products	37
OEM & Custom Boxes - PP Sheet	38
Tepra PRO SR-R170V	39 - 40
Tepra PRO SR-R980	41- 42
Tepra PRO SR530	43 - 44
Tepra PRO Tapes	45 - 46
Rippon Tapes Application Photo	47
Tepra Lite LR5E - LR20E	48
Tepra Lite LR30GS	49
Tepra Lite Tapes Application Photo	50
TETTE Automatic Hand Sanitizer Dispenser	51
HYBRID Fan	52
Distributor Information	53



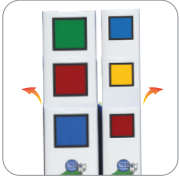
Unique and Eco-friendly design



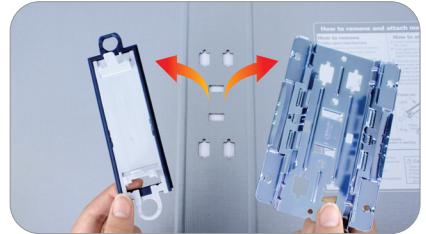
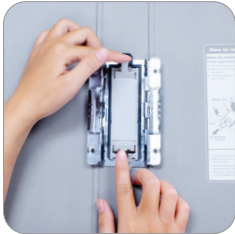
2470GSV    2478GSV    2475GSV    2473GSV

Mechanism can be opened from both sides

Take out the spine papers to make documents title



Attach and Remove mechanism from cover easily

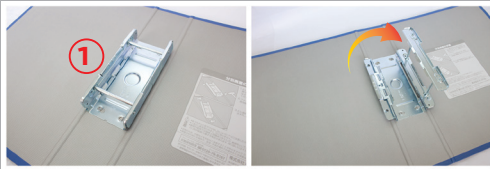


Pull the two latches up to unlock

Maximum pull out the rings toward 2 directions

Take the plastic bar and mechanism out of cover

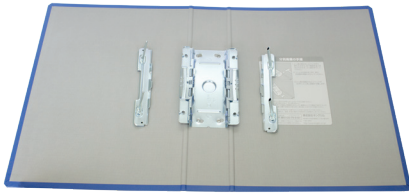
Item code	Color	Size	Dimension (WxDxH) mm	Capacity (Sheets)	Package (inner/outer)
2473GSV	<div style="display: flex; flex-direction: column; align-items: center;"> <div style="background-color: #0070C0; color: white; padding: 2px 5px; margin-bottom: 5px;">Blue</div> <div style="background-color: #333; color: white; padding: 2px 5px;">Black</div> </div>	A4S-3cm	243 x 46 x 307	300	10/40 pcs
2475GSV		A4S-5cm	243 x 66 x 307	500	10/40 pcs
2478GSV		A4S-8cm	243 x 96 x 307	800	10/30 pcs
2470GSV		A4S-10cm	243 x 116 x 307	1000	10/20 pcs



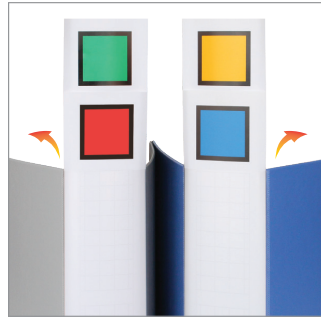
Open mechanism from the left ①



Open mechanism from the right ②



Mechanism can be opened from the left and right



Take out the spine papers to make documents title



Hold the mechanism in this position and lightly pull it to the left



Hold the bar with documents together and lift it up



Take the document you want out of mechanism



Hold the mechanism in this position and lightly pull it to the right



Hold the bar with documents together and lift it up



Take the document you want out of mechanism





1473GSV



1475GSV



1478GSV



*Multi-size for your selections*



1470GSV



Item code	Color	Size	Dimension (WxDxH) mm	Capacity (Sheets)	Package (inner/outer)
1473GSV	Blue	A4S-3cm	243 x 46 x 307	300	10/40 pcs
1475GSV	Black	A4S-5cm	243 x 66 x 307	500	10/40 pcs
1478GSV	Gray	A4S-8cm	243 x 96 x 307	800	10/30 pcs
1470GSV	Blue Gray	A4S-10cm	243 x 116 x 307	1000	10/20 pcs



1503E



Two sides openable mechanism

Item code	Color	Size	Dimension (WxDxH) mm	Capacity (Sheets)	Package (inner/outer)
1503E	Blue	A3E-3cm	441 x 46 x 314	300	10/20 pcs
1505E	Gray	A3E-5cm	441 x 66 x 314	500	10/20 pcs



3510

3513

3515

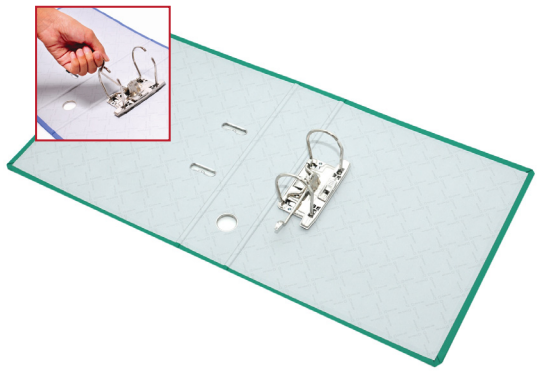


"Handle function" to take out your documents easily

Item code	Color	Size	Dimension (WxDxH) mm	Capacity (Sheets)	Package (inner/outer)
3510	Blue	A4S-10cm	252 x 116 x 307	1000	0/5 pcs
3513		A4S-13cm	252 x 146 x 307	1300	0/5 pcs
3515		A4S-15cm	252 x 166 x 307	1500	0/5 pcs



Good quality with competitive price



The remarkable points of Lever Arch Files are thick board and multi-color PP film cover

Item code	Color	Size	Dimension (WxDxH) mm	Capacity (Sheets)	Package (inner/outer)
2693GSV	<div style="display: flex; flex-direction: column; align-items: center;"> <div style="display: flex; gap: 5px;"> <span style="background-color: blue; color: white; padding: 2px;">Blue</span> <span style="background-color: black; color: white; padding: 2px;">Black</span> </div> <div style="display: flex; gap: 5px;"> <span style="background-color: gray; color: white; padding: 2px;">Gray</span> <span style="background-color: green; color: white; padding: 2px;">Green</span> </div> <div style="background-color: red; color: white; padding: 2px; margin-top: 5px;">Red</div> </div>	A4S-2 inches	280 x 50 x 318	300	0/40 pcs
2695GSV		A4S-3 inches	280 x 70 x 318	500	0/40 pcs
2793GSV		F4-2 inches	280 x 50 x 340	300	0/40 pcs
2795GSV		F4-3 inches	280 x 70 x 340	500	0/40 pcs



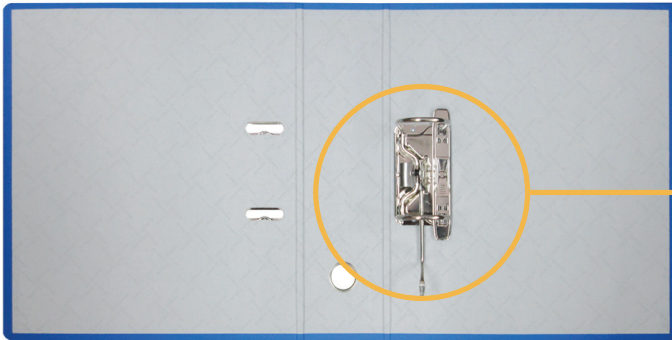
2697GSV



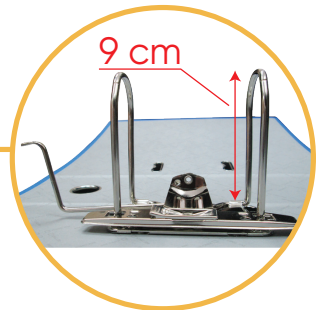
2797GSV



Capacity  
700  
sheets



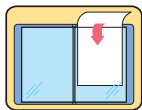
Long & durable mechanism



Item code	Color	Size	Dimension (WxDxH) mm	Capacity (Sheets)	Package (inner/outer)
2697GSV	Blue Black	A4S-9cm	280 x 90 x 318	700	0/40 pcs
2797GSV	Blue Black	F4-9cm	280 x 90 x 340	700	0/40 pcs



## Clear File 176



Classify documents conveniently



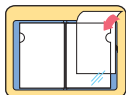
176-20GSV



176-40GSV

Item code	Color	Thickness (mm)		Size	Dimension (WxDxH) mm	Pockets	Package (inner/outer)
		Cover	Pocket				
176-20GSV	Red Orange Green	0.8	0.06	A4S	231 x 12 x 307	20	10/50 pcs
176-40GSV	Navy White	1.0					

## Clear File 1737



1737GSV

Item code	Color	Thickness (mm)		Size	Dimension (WxDxH) mm	Pockets	Package (inner/outer)
		Cover	Pocket				
1737GSV	Red Orange Green Navy White	0.6	0.18	A4S	240 x 14 x 315	8	10/60 pcs





186-10GSV



186-20GSV



186-40GSV



186-60GSV

Classify documents conveniently



With modern design and various colors make your office more lively and professional

Item code	Color		Thickness (mm)		Size	Dimension (WxDxH) mm	Pockets	Package (inner/outer)
			Cover	Pocket				
186-10GSV	Smoke Blue	Blue	0.6		A4S	231 x 10 x 307	10	10/80 pcs
	Cobalt Blue	Coral Pink						
186-20GSV	Green	Orange	0.8	0.06	A4S	231 x 12 x 307	20	10/50 pcs
	Pink	Red						
186-40GSV	Clear	Gray	1.0		A4S	231 x 22 x 307	40	8/32 pcs
	Pea Green	Yellow						
186-60GSV	Black	White	1.2		A4S	231 x 32 x 307	60	6/24 pcs
	Matt Black	Matt White						



136-10GSV



136-20GSV



136-40GSV

6 Bright colors



136-60GSV

Item code	Color	Thickness (mm)		Size	Dimension (WxDxH) mm	Pockets	Package (inner/outer)
		Cover	Pocket				
136-10GSV		0.6	0.06	A4S	231 x 10 x 307	10	10/80 pcs
136-20GSV	Blue Sky Blue Pea Green	0.8			231 x 14 x 307	20	10/50 pcs
136-40GSV	Orange Pink Black	1.0			231 x 23 x 307	40	8/32 pcs
136-60GSV		1.2			231 x 34 x 307	60	6/24 pcs



136-80GSV



136-100GSV



Bigger capacity with more pockets  
Durable, waterproof pockets  
protect document

Item code	Color	Thickness (mm)		Size	Dimension (WxDxH) mm	Pockets	Package (inner/outer)
		Cover	Pocket				
136-80GSV	Blue Sky Blue Pea Green	1.2	0.06	A4S	231 x 50 x 307	80	6/12 pcs
136-100GSV	Orange Pink Black	1.2			231 x 62 x 307	100	6/12 pcs



236-10GSV



236-20GSV



236-40GSV



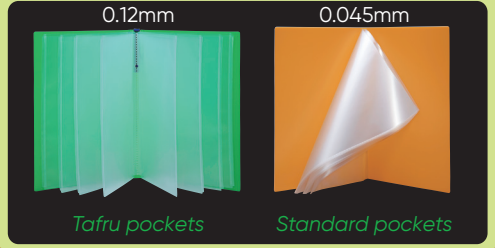
236-60GSV

Item code	Color	Thickness (mm)		Size	Dimension (WxDxH) mm	Pockets	Package (inner/outer)
		Cover	Pocket				
236-10GSV		0.4	0.04	A4S	230 x 9 x 307	10	10/80 pcs
236-20GSV	Blue Red	0.7			231 x 14 x 307	20	10/60 pcs
236-40GSV	Black White	0.9			240 x 23 x 307	40	10/30 pcs
236-60GSV		0.9			240 x 34 x 307	60	10/20 pcs

Keep leaflet, brochure, catalogue,...

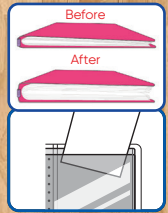


Store a large quantity of documents for a long time



Stretch in 8 mm

Before and after filling up documents



Design help to put documents into pockets easily



8152TH



8152T

Item code	Color	Thickness (mm)		Size	Dimension (WxDxH) mm	Pockets	Package (inner/outer)
		Cover	Pocket				
8152TH	Blue Green Orange	0.9	0.12	A4S	243 x 26 x 315	10	10/40 pcs
8152T	Pink Clear	0.9			243 x 33 x 315		



## Name Card Holder

212TGSV

212GSV



Pocket's thickness is 0.05 mm for excellent storing way  
Many elegant colors and designs make your own style

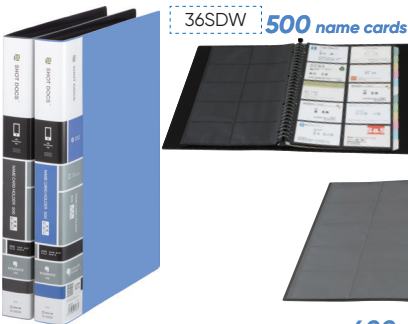
224TGSV

224GSV



Item code	Color	Thickness (mm)		Dimension (WxDxH) mm	Pockets	Package (inner/outer)
		Cover	Pocket			
212TGSV	Smoke Blue, Cobalt Blue, Blue, Green, Pea Green, Yellow, Orange, Red	0.6	0.05	113 x 16 x 192	120	10/60 pcs
224TGSV	Coral Pink, Pink, Gray, Clear	0.8		113 x 31 x 192	240	10/40 pcs
212GSV	Black, White, Matt Black, Matt White	0.6		113 x 16 x 192	120	10/60 pcs
224GSV	Black, White, Matt Black, Matt White	0.8		113 x 31 x 192	240	10/40 pcs

## Name Card Holder SHOTDOCS



Item code	Color	Dimension (WxDxH) mm	Capacity (name card)	Package (inner/outer)
36SDW	Blue, Black	253 x 35 x 317	500	10/20 pcs
47SD	Blue, Black	226 x 17 x 307	400	10/40 pcs



Light and compact to carry  
Space saving as folded back 360 degree



**Open**  
Press on the right side of ring mechanism



Easy to take out or add more pockets



**Close**  
Press two sides as arrow directions



Add/replace sheet protectors 30 holes 760 series (760-10GSV, 760-50GSV, 760-100GSV)



Item code	Color				Thickness (mm)		Size	Dimension (WxDxH) mm	Attached pockets (pcs)	Capacity (pcs)	Package (inner/outer)
	Smoke Blue	Blue	Green	Yellow	Cover	Pocket					
256GSV	Card Pink	Pink	Purple	Clear	0.5	0.06	A4S	245 x 14 x 308	10	15	10/50 pcs
	Black	White									

## Sheet Protectors 11 Holes



860-10GSV    860-50GSV    860-100GSV



Thickness  
60 microns



- Made from durable PP material
- 11-hole sheet protectors are suitable for 2,3,4 ring binders to store A4 documents

Item code	Thickness	Size	Dimension (WxH) mm	Detailed package (pcs/pack)	Package (inner/outer)
860-10GSV	60 microns	A4S	230 x 300	10 pcs/pack	0/140 packs
860-50GSV				50 pcs/pack	0/28 packs
860-100GSV				100 pcs/pack	0/14 packs

## Sheet Protectors 30 Holes



740-10GSV    740-50GSV    740-100GSV



760-10GSV    760-50GSV    760-100GSV

Refill pockets 30 holes are suitable for storage and protection A4 sized papers without punching on your important documents

Item code	Thickness	Size	Dimension (WxH) mm	Detailed package (pcs/pack)	Package (inner/outer)
740-10GSV	40 microns	A4S	230 X 300	10 pcs/pack	0/200 packs
740-50GSV				50 pcs/pack	0/40 packs
740-100GSV				100 pcs/pack	0/20 packs
760-10GSV	60 microns			10 pcs/pack	0/140 packs
760-50GSV				50 pcs/pack	0/28 packs
760-100GSV				100 pcs/pack	0/14 packs



62ITGSV



*Eco-friendly,  
transparent  
material for  
dust-proof,  
moisture-proof,  
water-proof  
and easy to clean*



622TGSV

Item code	Color	Thickness	Size	Dimension (WxDxH) mm	Capacity (sheets)	Package (inner/outer)								
62ITGSV	<table border="1"> <tr> <td>Cobalt Blue</td> <td>Blue</td> <td>Green</td> <td>Pea Green</td> </tr> <tr> <td>Yellow</td> <td>Orange</td> <td>Pink</td> <td>Red</td> </tr> </table>	Cobalt Blue	Blue	Green	Pea Green	Yellow	Orange	Pink	Red	1.0 mm	A4S-19mm	244 x 28 x 307	140	10/50 pcs
Cobalt Blue	Blue	Green	Pea Green											
Yellow	Orange	Pink	Red											
622TGSV	<table border="1"> <tr> <td>Gray</td> <td>Clear</td> <td>Black</td> <td>White</td> </tr> </table>	Gray	Clear	Black	White	1.2 mm	A4S-30mm	256 x 41 x 307	250	10/50 pcs				
Gray	Clear	Black	White											



691TGSV



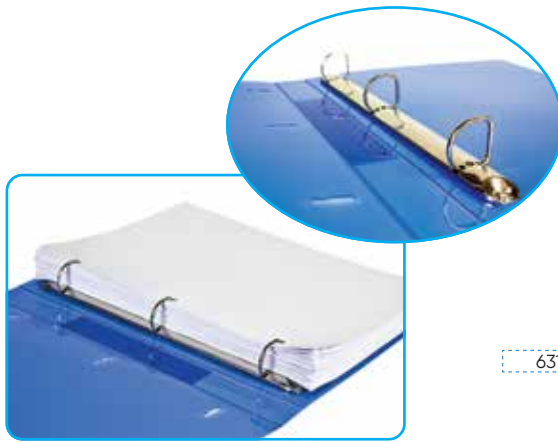
Elegant design with beautiful colors  
Finger hole on spine helps you to take out file easily from shelf



692TGSV

Item code	Color	Thickness	Size	Dimension (WxDxH) mm	Capacity (sheets)	Package (inner/outer)								
691TGSV	<table border="1"> <tr> <td>Cobalt Blue</td> <td>Blue</td> <td>Green</td> <td>Pea Green</td> </tr> <tr> <td>Yellow</td> <td>Orange</td> <td>Pink</td> <td>Red</td> </tr> </table>	Cobalt Blue	Blue	Green	Pea Green	Yellow	Orange	Pink	Red	1.0 mm	A4S-20mm	255 x 33 x 307	180	10/40 pcs
Cobalt Blue	Blue	Green	Pea Green											
Yellow	Orange	Pink	Red											
692TGSV	<table border="1"> <tr> <td>Gray</td> <td>Clear</td> <td>Black</td> <td>White</td> </tr> </table>	Gray	Clear	Black	White	1.2 mm	A4S-30mm	256 x 45 x 307	280	10/40 pcs				
Gray	Clear	Black	White											

## PP 3 D-Ring File Simplease



63ITGSV

*The 3 D-Ring mechanism design is great for storing documents*

Item code	Color	Thickness	Size	Dimension (WxDxH) mm	Capacity (sheets)	Package (inner/outer)												
63ITGSV	<table border="1"> <tr> <td>Cobalt Blue</td> <td>Blue</td> <td>Green</td> <td>Pea Green</td> </tr> <tr> <td>Yellow</td> <td>Orange</td> <td>Pink</td> <td>Red</td> </tr> <tr> <td>Gray</td> <td>Clear</td> <td>Black</td> <td>White</td> </tr> </table>	Cobalt Blue	Blue	Green	Pea Green	Yellow	Orange	Pink	Red	Gray	Clear	Black	White	1.0 mm	A4S-20mm	255 x 33 x 307	180	10/40 pcs
Cobalt Blue	Blue	Green	Pea Green															
Yellow	Orange	Pink	Red															
Gray	Clear	Black	White															

## PP Ring File Simplease



641GSV

642GSV

*A perfect combination of bright colors and durable mechanism*



Item code	Color	Thickness	Size	Dimension (WxDxH) mm	Capacity (Sheets)	Package (inner/outer)			
641GSV	<table border="1"> <tr> <td>Blue</td> <td>Sky Blue</td> <td>Pea Green</td> </tr> </table>	Blue	Sky Blue	Pea Green	1.0 mm	A4S-19mm	244 x 28 x 307	140	10/50 pcs
Blue	Sky Blue	Pea Green							
642GSV	<table border="1"> <tr> <td>Orange</td> <td>Pink</td> <td>Black</td> </tr> </table>	Orange	Pink	Black	1.2 mm	A4S-30mm	256 x 41 x 307	250	10/50 pcs
Orange	Pink	Black							





611GSV



612GSV



PP Ring File is the harmonious combination among colors, design and superior quality

Item code	Color	Thickness	Size	Dimension (WxDxH) mm	Capacity (Sheets)	Package (inner/outer)
611GSV	Blue Green Yellow	0.9 mm	A4S-19mm	243 x 27 x 307	140	10/40 pcs
612GSV	Red Black		A4S-25mm	243 x 33 x 307	200	10/40 pcs



691GSV



692GSV

D-Ring & Compressor bar



Bright colors - Reasonable price

Item code	Color	Thickness	Size	Dimension (WxDxH) mm	Capacity (Sheets)	Package (inner/outer)
691GSV	Blue Green Yellow	1.1 mm	A4S-20mm	255 x 33 x 307	180	10/40 pcs
692GSV	Red Black		A4S-30mm	256 x 45 x 307	280	10/40 pcs

## BF Series



RING FILE



D-RING FILE



Z FILE



603BFGSV



608BFGSV



568BFGSV

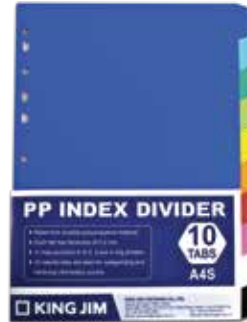
Item code	Color	Size	Dimension (WxDxH) mm	Capacity (Sheets)	Package (inner/outer)
603BFGSV	<span style="background-color: #0070C0; color: white; padding: 2px;">Blue</span> <span style="background-color: #333; color: white; padding: 2px;">Black</span> <span style="background-color: #808080; color: white; padding: 2px;">Gray</span> <span style="background-color: #E91E63; color: white; padding: 2px;">Pink</span>	A4S-25mm	253 x 40 x 307	200	20/60 pcs
608BFGSV		A4S-23mm	253 x 40 x 307	210	20/60 pcs
568BFGSV	<span style="background-color: #0070C0; color: white; padding: 2px;">Blue</span>	A4S-10mm	243 x 25 x 307	100	20/80 pcs

## PP Index Divider

- Made from durable PP material and thickness of 0.2mm
- 11-holes punched to fit 2,3 and 4 ring binders
- Many colorful tabs are ideal for categorizing and retrieving information quickly



707-6GSV



707-10GSV

Item code	Thickness (mm)	Size / tabs	Dimension (WxH) mm	Detailed package (sets/pack)	Package (inner/outer)
707-6GSV	0.2 mm	A4S-6 tabs	225 x 297	1 set/pack	0/80 packs
707-10GSV		A4S-10 tabs		1 set/pack	0/80 packs

- Colorful tabs are effective to categorize & organize your documents professionally
- Contents page can be written specifically in each category
- 11-holes punched to fit 2,3 and 4 ring binders



807-6EGSV

807-6E5GSV

807-10EGSV

807-10E5GSV

807-12EGSV

807-12E5GSV

Item code	Size / tabs	Dimension (WxH) mm	Detailed package (sets/pack)	Package (inner/outer)
807-6EGSV	A4-6 tabs	222 x 297	1 set/pack	0/80 packs
807-10EGSV	A4-10 tabs		1 set/pack	0/80 packs
807-12EGSV	A4-12 tabs		1 set/pack	0/80 packs
807-6E5GSV	A4-6 tabs		5 sets/pack	0/16 packs
807-10E5GSV	A4-10 tabs		5 sets/pack	0/16 packs
807-12E5GSV	A4-12 tabs		5 sets/pack	0/16 packs

*Easy to classify documents*



907GSV

907-4GSV

907-6YKGSV

907-10YKGSV

907-12YKGSV

Item code	Size / tabs	Dimension (WxH) mm	Detailed package (sets/pack)	Package (inner/outer)
907GSV	A4S-5 tabs	222 x 297	10 sets/pack	10/40 packs
907-4GSV	A4S-5 tabs		10 sets/pack	10/40 packs
907-6YKGSV	A4S-6 tabs		1 set/pack	0/80 packs
907-10YKGSV	A4S-10 tabs		1 set/pack	0/80 packs
907-12YKGSV	A4S-12 tabs		1 set/pack	0/80 packs

## PP Pen Case FLYING COLORS



The best storage for protecting and keeping your pens



Item code	Color	Thickness(mm)	Dimension (WxDxH) mm	Package (inner/outer)
251GVS	Smoke Blue Blue Green Orange Pink Coral Pink	0.7	170 x 23 x 56	20/40 pcs

## Carrying Case TEFIT



282T

282



282TW

282W

Item code	Color	Thickness	Size	Dimension (WxDxH) mm	Package (inner/outer)
282T; 282	Blue Clear	0.9mm	A4-40mm	349 x 43 x 271	0/10 pcs
282TW; 282W	Black		A4-70mm	349 x 73 x 271	0/6 pcs

## Z File Simplease

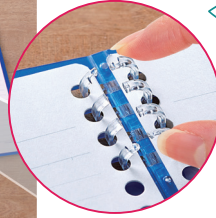
**Simplease**  
SIMPLE FILE SERIES



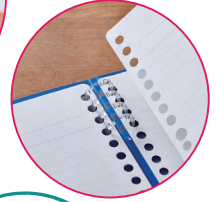
Strong mechanism and eye-catching colors make it more attractive



Item code	Color	Thickness	Size	Dimension (WxDxH) mm	Capacity (Sheets)	Package (inner/outer)
578GSV	Blue Sky Blue Pea Green Orange Pink Black	0.7 mm	A4S-12mm	241 x 17 x 307	120	10/40 pcs



Easy to take out or add more papers



Just a slight press on the right side of the ring mechanism to open

With the purpose of helping users to feel more comfortable and faster in writing, ring mechanism does not touch your hand while taking notes



9854GSV



9855GSV



9856GSV

Item code	Color	Thickness (mm)	Size / holes	Dimension (WxDxH) mm	Attached paper (sheets)	Capacity (sheets)	Package (inner/outer)
9854GSV	Smoke Blue, Blue, Light Blue	0.5	A5-20 holes	159 x 14 x 217	15	30	10/50 pcs
9855GSV	Green, Yellow, Orange, Red		B5-26 holes	193 x 14 x 264			10/60 pcs
9856GSV	Coral Pink, Pink, Purple, Clear, Black, White	0.6	A4-30 holes	221 x 14 x 304			10/60 pcs



# TEFRENU Ring Note Pearl Color



With the purpose of helping users to feel more comfortable and faster in writing, ring mechanism does not touch your hand while taking notes.

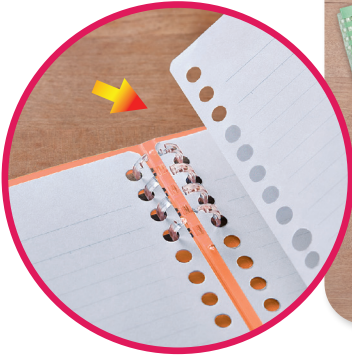
Thin and soft cover material that fits in your hand and is easy to hold

Flexible cover can be bent



Item code	Color	Thickness (mm)	Size/ holes	Dimension (WxDxH) mm	Attached paper (sheets)	Capacity (sheets)	Package (inner/outer)
9855PGSV	Ivory	0.35	B5-26 holes	193 x 14 x 264	15	30	10/60 pcs
	Navy						
	Plum						
	Pale Pink						
	Stone Gray						
Smoky Green							
Pale Blue							
Red							

Refills for Tefrenu Ring Note  
Easy to take out or add more papers



- Thick and lined refill paper
- Smooth for writing, suitable for different pen types
- More economical, eco-friendly & convenient to reuse cover of Tefrenu



To add / replace loose leaf paper by accompanying:

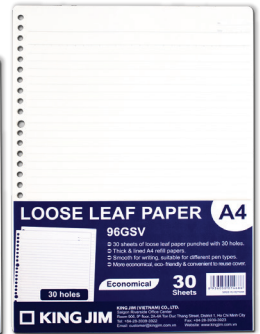
- 94GSV with 9854GSV
- 95GSV with 9855GSV
- 96GSV with 9856GSV



94GSV



95GSV



96GSV

Item code	Size / holes	Dimension (WxH) mm	Detailed package (sheets/pack)	Package (inner/outer)
94GSV	A5 -20 holes	148 x 210	30 sheets/pack	0/100 packs
95GSV	B5 -26 holes	182 x 257	30 sheets/pack	0/100 packs
96GSV	A4 -30 holes	210 x 297	30 sheets/pack	0/100 packs



9954GSV

9955GSV

9956GSV

Item code	Color	Thickness (mm)	Size / holes	Dimension (WxDxH) mm	Attached papers (sheets)	Capacity (sheets)	Package (inner/outer)
9954GSV	<span>Pink</span> <span>Orange</span> <span>Yellow</span> <span>Green</span>	0.6	A5 fold in half	126 x 20 x 166	10	25	10/80 pcs
9955GSV	<span>Smoke Blue</span> <span>Light Blue</span> <span>Navy</span> <span>Clear</span>		B5 fold in half	150 x 20 x 201			10/80 pcs
9956GSV	<span>Black</span> <span>White</span>		A4 fold in half	170 x 20 x 229			10/80 pcs

## Loose Leaf Paper of COMPACT Note

Write neatly with 6mm ruled paper  
Paper doesn't dazzle your eyes



404CY-30



405CY-30



406CY-30

To add / replace  
Loose leaf paper  
by accompanying:

- 404CY-30 with 9954GSV
- 405CY-30 with 9955GSV
- 406CY-30 with 9956GSV

Item code	Size / holes	Dimension (WxDxH) mm	Detailed package (sheets/pack)	Package (inner/outer)
404CY-30	A5 fold in half	148 x 6 x 107	30 sheets/pack	0/80 packs
405CY-30	B5 fold in half	182 x 6 x 131	30 sheets/pack	0/40 packs
406CY-30	A4 fold in half	210 x 6 x 151	30 sheets/pack	0/40 packs

## Durable Box

Amazing boxes have advantages such as high durability and lightweight.

## Multi-purposes

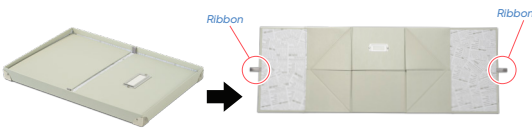
Boxes are used to contain and protect items such as stationeries, accessories, cosmetics, personal things, toys, or using as gift boxes



## STEPS TO FOLD BOXES

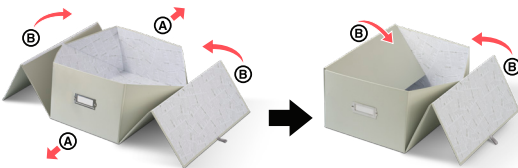
### STEP 1

From the initial shape, we hold 2 ribbons at 2 edges of the box and pull towards the left and right direction.



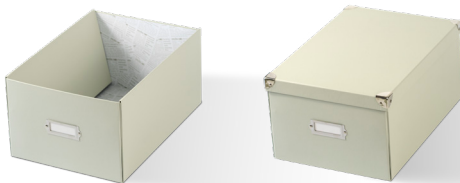
### STEP 2

Erect two (A) sides. Fold two (B) sides into the inner of the box.



### STEP 3

Close the lid onto the box. The box is finished.



## Easy Assembling

Amazing boxes with smart design, from completed box, they can be fold up to the lid shape (being enclosed in the lid).



## Nice design and various colors

As home decorated items, boxes will bring neatly arranged furniture to your lovely houses and offices.



Item code	Color	Size	Dimension (WxDxH) mm	Package (inner/outer)
MBX-S	Gray Ash White	Nhỏ - S	260 x 155 x 135	0/12 pcs
MBX-M		Vừa - M	280 x 205 x 155	0/12 pcs
MBX-L	Pink Cream	Lớn - L	380 x 270 x 180	0/12 pcs

# Lezaface:U Series LUXURY & DELICATE

Stationery not only for its function, but also be a part of your urban life

## Clear File Lezaface



1931GSV



1931WGSV



Deluxe look with synthetic leather cover

Item code	Color	Thickness of pocket (mm)	Size	Dimension (WxDxH) mm	Pockets	Package (inner/outer)
1931GSV	Navy Gray Black	0.05	A4S	230 x 15 x 314	20	10/30 pcs
1931WGSV	Olive Camel			230 x 20 x 314		

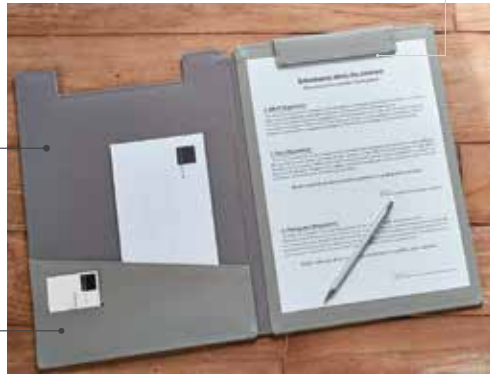
## Clip Board Lezaface



1932GSV

Protect documents with front cover

Magnetic clip for opening and closing easily



In addition to inside pocket and business card's pocket

Item code	Color	Size	Dimension (WxDxH) mm	Capacity (Sheets)	Package (inner/outer)
1932GSV	Navy Gray Black Olive Camel	A4E	242 x 13 x 340	10	10/30 pcs





*Elegant and slim design with skilful seam*



1994GSV

1997GSV

Item code	Color	Dimension (WxDxH) mm	Package (inner/outer)
1994GSV	<span>Navy</span> <span>Gray</span> <span>Black</span> <span>Olive</span> <span>Camel</span>	246 x 16 x 140	10/40 pcs
1997GSV		326 x 16 x 250	10/40 pcs

**Pen Case Lezaface**

*Lid with magnet and can be folded back to be a conveniently tilted pen tray*



1905GSV



Item code	Color	Dimension (WxDxH) mm	Package (inner/outer)
1905GSV	<span>Navy</span> <span>Gray</span> <span>Black</span> <span>Olive</span> <span>Camel</span>	186 x 70 x 26	10/60 pcs







An innovative design with magnetic flaps holding documents effectively



The clip is able to hold lots of documents tightly



Unique design of 360° magnetic flap is convenient for 2 sides using



Documents could be turned back & held strongly by the magnetic flap



Convenient to take notes on next pages

Item code	Color	Size	Dimension (WxDxH) mm	Package (inner/outer)
5085GSV	<span style="background-color: #0056b3; color: white; padding: 2px;">Blue</span> <span style="background-color: #008000; color: white; padding: 2px;">Green</span> <span style="background-color: #c00000; color: white; padding: 2px;">Red</span> <span style="background-color: #000000; color: white; padding: 2px;">Black</span>	A4E	227 x 18 x 325	10/60 pcs



- Strong mechanism with durable cover to protect documents
- Especially with the cover can be folded back 360 degree
- Elegant colors and stylish

Item code	Color	Size	Dimension (WxDxH) mm	Package (inner/outer)
8315GSV	<b>Blue</b> <b>Black</b>	A4E	233 x 17 x 314	10/40 pcs

Clip board is designed with 2 formats and 5 different sizes  
Assist with writing and submitting daily documents



Item code	Color	Size	Dimension (WxH) mm	Package (inner/outer)
8303	<b>Black</b>	A5E	168 x 230	10/80 pcs
8304		B5E	205 x 281	10/80 pcs
8305		A4E	225 x 313	10/80 pcs
8306		B4E	281 x 382	10/50 pcs
8307		A3E	320 x 443	10/50 pcs
8333	<b>Black</b>	A5S	230 x 168	10/80 pcs
8334		B5S	281 x 205	10/80 pcs
8335		A4S	313 x 225	10/80 pcs
8336		B4S	382 x 281	10/50 pcs
8337		A3S	443 x 320	10/50 pcs

## Clear Holder



10 pieces/pack



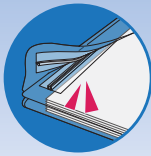
50 pieces/pack



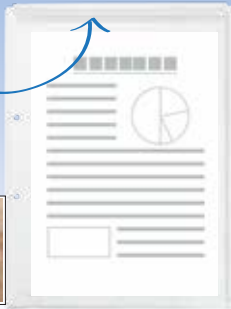
100 pieces/pack

Item code	Thickness	Size	Dimension (WxH) mm	Detailed package (pcs/pack)	Package (inner/outer)
737-10GSV	0.18mm	A4S	220 X 310	10 pcs/pack	10/60 packs
737-50GSV				50 pcs/pack	0/12 packs
737-100GSV				100 pcs/pack	0/6 packs

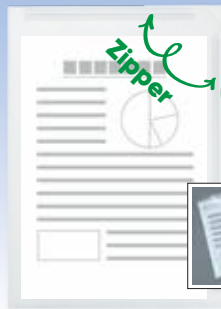
## Zipper Holder



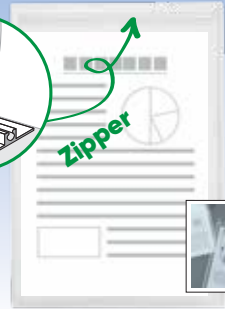
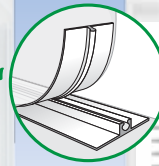
King Holder



787-10

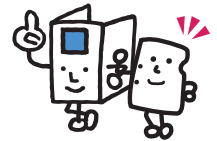


856-10



857-10

With great innovation in design, zipper holders not only have a larger capacity, but also prevent documents from falling



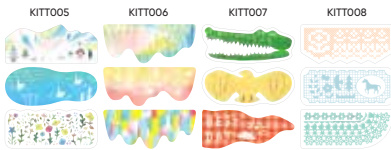
Item code	Thickness	Size	Dimension (WxDxH) mm	Detailed package (pcs/pack)	Package (inner/outer)
856-10	0.18mm	A4S	225 x 312 (WxH)	10 pcs/pack	10/40 packs
857-10			230 x 10 x 328 (WxDxH)		
787-10			230 x 10 x 307 (WxDxH)		



## KITTA Tape

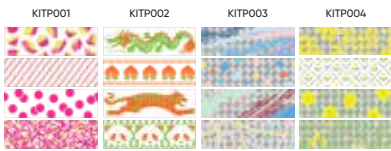
### KITTA Clear Tape (7 sheets x 3 designs)

Tapes Size: 50 x 21mm (W x H)



### KITTA Special Tape (10 sheets x 4 designs)

Tapes Size: 50 x 15mm (W x H)



## boogie board™

## Boogie Board



8.5" LCD Erase 50,000 times

3.2 mm Thickness Dedicated Stylus

Dimension (mm) 141 x 222 (W)x(H) Weight: Approx 110g

**BB-1GX** 3 màu: hồng, xanh dương, đen  
3 colors: pink, blue, black

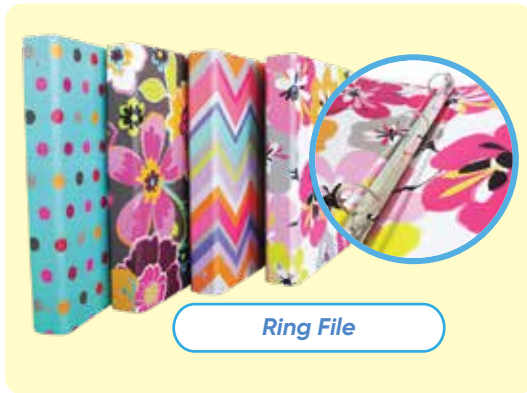
**KING JIM**

36

www.kingjim.com.vn

King Jim (Vietnam) offers OEM (Original Equipment Manufacturer) products, following customers' requests such as contents, designs, colors and sizes. In case needed, we also provide design services

<b>Contents</b>	<b>Details</b>
<b>Product</b>	PP/ paper file folders, Lever Arch Files, Pipe Files Box folders, Clear Files, Printing OEM File Folders
<b>Dimension &amp; color</b>	Multiple sizes & colors
<b>Mechanism</b>	Ring, D-Ring and others
<b>Material</b>	PP (Polypropylen) Plastic and paper





- **Technology requirement:** Can produce many different shapes such as round boxes, square boxes, rectangle boxes, polygons boxes, etc. King Jim (Vietnam) have ability to supply most of boxes from simple boxes to complicated boxes such as wine boxes, perfume boxes, watch boxes, cake boxes, tea boxes, etc. and apply sophisticated techniques following request as magnet boxes or sliding boxes

- **Dimension and Color:** Multi- size and color

- **Material:** Paper and cardboard



Sample 1



Sample 2



Sample 3



Sample 4



Sample 5



Sample 6 & other products

PP Sheet



<b>Thickness</b>	0,1 - 1,5 mm (100 - 1500 microns)
<b>Width</b>	Maximum 980 mm
<b>Length</b>	Unlimited
<b>Color</b>	Many bright colors and other colors following customer's request
<b>Material</b>	Made of Polypropylen - eco friendly material (included: transparent and solid plastic)
<b>Feature</b>	Good quality and be suitable for many different purposes

Vietnamese  
version



Scan to  
Visit our website



Xin chào



**Outstanding functions**

Vietnamese interface

Input language: Vietnamese & English

Input method: VNI / Telex

Ribbon printing

Font 5 Font

Standard	Xin chào	Hello
Serif	Doanh số	Turnover
Calligraphy	Thống kê	Statistic
Classic	Sản phẩm	Product
Art	Báo cáo	Report

Style

- A Normal
- △ Line
- △ Shadow
- △ line shadow
- A Bold
- △ italic

Item code	<b>SR-R170V</b>
Color	Beige
Label width	4, 6, 9, 12, 18 mm
Dimension	Approx 183 x 219 x 58 mm
Mass	~580g excluding tape & batteries
LCD display	15 characters x 5 lines
Font	Standard, Serif, Calligraphy, Classic, Art
Symbol & frame	1,060 words & symbols, 69 frames/tables, 6 font styles
Power	Use 2 powers: AC Adapter or Batteries (6pcs AA alkaline)
Contents	Tepra PRO SR-R170V machine, AC Adapter, manual, Warranty card Tepra PRO Tape (Trial) 12mm - Tape length is 2.5m

# Printing sticky label only in 3 steps!!

1



Office



2



3

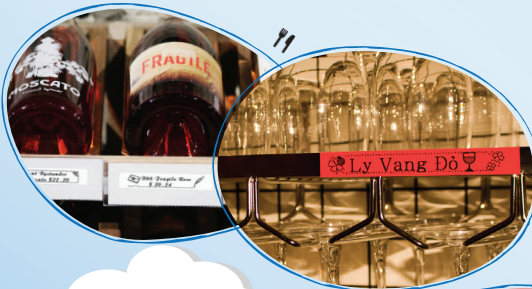


School



Useful applications with label printer Tepra Pro Vietnamese version

Restaurant



Factory



Decoration



Shop





**BRAND NEW**

**UPGRADED VERSION OF THE SR970**

Round angle cutting

Printing with high quality

Maximum printable width

High Definition Printing 360dpi/432dot

Equipped with an "auto trimmer"



Handle Conveniently

**R** 4-36mm  
TAPE

**4 mm** **6 mm** **9 mm** **12 mm** **18 mm** **24 mm** **36 mm**

<b>Product name</b>	Label printer TEPRA PRO SR-R980
<b>Color</b>	Black
<b>Tape width</b>	4/ 6/ 9/ 12/ 18/ 24/ 36 mm
<b>Product dimension</b>	195 x 252 x 101 (W x D x H)
<b>Weight</b>	1.260g (Excluding batteries, tape)
<b>Connect to PC</b>	Software Driver TEPRA SPC10 interface in English
<b>Available fonts</b>	11 Kanji, 15 Kana, 19 Alphanumeric
<b>Power</b>	AC Adapter or Batteries (6pcs AA alkaline)
<b>Accessories</b>	Tepra PRO SR-R980 Label Printer, Trial PRO tape cartridge, head cleaning tape (SR36C), AC adapter, instruction manual (with warranty), Tepra PRO tape (trial) 12mm - Length 4m *** Exclude USB A/B Cable



**OUTSTANDING FEATURES**



1. Reduce wasted label margins! **NEW**
2. Auto Detects tape type and makes label creation more convenient
3. Equipped with "pick and print" function **NEW**
4. Flexible using methods **NEW**
  - \*Using USB cable to connect to the computer
  - \*Using directly in machine
6. Equipped with automatic corner cutter
7. Barcode & QR code printing feature
8. Maximum printable width & character size with a 360dpi x 432pdot high-definition print head **NEW**

**Add "Symbols/ Pictograms" "Frame Borders"**

Added many "Signs/Pictures, Borders" for convenience for each area "stores; construct; factory; hospital"



**Variety template**

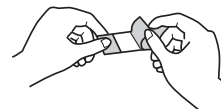
With more than 172 designs used in offices, production sites, medical facilities, shops.....



**MANG NÓN BẢO HỘ**  
Wear safety helmet



**PLEASE WEAR A MASK**  
Avoid infection in the hospital



**Easy barcode generation**

Can print eight barcodes (JAN-13, QR code,...) and 2D codes

Name	Lap Top	
Code	RD0001	
Date	08/08/20XX	
Department	Accountant	





Round angle cutting



Handle Conveniently

Scan to  
Visit our website



<b>Item code</b>	<b>SR530</b>
<b>Color</b>	Silver
<b>Label width</b>	4, 6, 9, 12, 18, 24 mm
<b>Dimension</b>	Approx 196 x 218 x 63 mm
<b>Mass</b>	≈850g excluding tape & batteries
<b>LCD display</b>	6 characters x 4 lines
<b>Font</b>	5 Kanji, 9 Kana, 11 Alphanumeric
<b>Symbol &amp; frame</b>	8,219 words & symbols, 120 frames, 7 backgrounds, 7 font styles, 4 tables
<b>Connect to PC</b>	Window 10/8.1/8/7/Vista 32 bit, 64 bit, 180dpi Software Driver SPC10 interface in English
<b>Power</b>	Use 2 powers: AC Adapter or Batteries (6pcs AA alkaline)
<b>Contents</b>	Tepra PRO SR530 machine, AC Adapter, manual, Warranty card, Software (CD-ROM) Tepra PRO Tape (Trial) 12mm - Tape length is 4m • Exclude USB A/B cable



Continuous printing  
& cutting



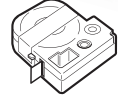
## Outstanding functions

- Print Barcode & QR code*
- Typing Vietnamese when connecting to PC*
- Able to import data from excel file*
- Continuous printing*
- Enlarge words printing*
- Able to print basic B&W image*
- Round angle cutting*





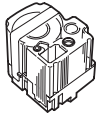
• White, clear & 5 colors tapes Tape length 8m



④ ⑥ ⑨ ⑫ ⑮ ⑳ ㉓ ㉖

Size	4mm	6mm	9mm	12mm	18mm	24mm	36mm	50mm
White / Black Ink	SS4K	SS6K	SS9K	SS12K	SS18K	SS24K	SS36K	SS50K
Clear / Black Ink	ST4K	ST6K	ST9K	ST12K	ST18K	ST24K	ST36K	
Red / Black Ink	SC4R	SC6R	SC9R	SC12R	SC18R	SC24R	SC36R	SC50R
Pink / Black Ink		SC6P	SC9P	SC12P	SC18P			
Yellow / Black Ink	SC4Y	SC6Y	SC9Y	SC12Y	SC18Y	SC24Y	SC36Y	SC50Y
Green / Black Ink	SC4G	SC6G	SC9G	SC12G	SC18G	SC24G	SC36G	SC50G
Blue / Black Ink	SC4B	SC6B	SC9B	SC12B	SC18B	SC24B	SC36B	SC50B

• Tepra PRO Tapes are only used for King Jim Tepra Pro Machines



Package (inner/outer): 5/120 pcs \* 36mm: 5/80pcs

- Diverse sticker & ribbon tapes
- High Durability
- Suitable to many material surfaces

## Rows/tape

	4mm	6mm	9mm	12mm	18mm	24mm	36mm
SR-R170V	1	2	3	4	6	—	—
SR530	1	2	3	4	6	8	—
SR980	1	2	3	5	7	10	13

\* Rows/ tape is applied for operating directly on Tepra machines



## Tepra Pro Tape Length 16m

Size	12mm	18mm
White / Black Ink	SS12KL	SS18KL

Tape length **16m**



**NEW****Tepra PRO Tapes****PAGINATION  
NOTE TAPE**Tape length **8m**

Tape width	6mm	9mm	12mm	18mm	24mm
Yellow / Black Ink					SCY24Y
White / Black Ink					SSY24K
Red / Black Ink					SCY24R

**TIGHT  
ADHESIVE  
TAPE**Tape length **8m**

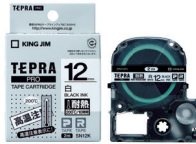
Tape width	6mm	9mm	12mm	18mm	24mm
Yellow / Black Ink	SC6YW	SC9YW	SC12YW	SC18YW	SC24YW
White / Black Ink	SS6KW	SS9KW	SS12KW	SS18KW	SS24KW

**RED TEXT  
TAPE**Tape length **8m**

Tape width	6mm	9mm	12mm	18mm	24mm
Yellow / Red Ink			SC12YR		
White / Red Ink			SS12R		

**OUTDOOR  
TAPE**Tape length **7m**

Tape width	6mm	9mm	12mm	18mm	24mm
Yellow / Black Ink			SC12YV		
White / Black Ink			SS12KV		

**HEAT  
RESISTANCE  
TAPE**Tape length **2m**

Tape width	6mm	9mm	12mm	18mm	24mm
White / Black Ink			SN12K		

**TUBULAR  
TAPE**Tape length **2.5m**

Tape width	Φ 5mm (Φ 2.8~Φ 5.5mm)	Φ 11mm (Φ 5.5~Φ 11mm)
White / Black Ink	SUSS	SU11S

**CABLE  
TAPE**Tape length **8m**

Tape width	24mm (Φ 2.1~Φ 5.4mm)
White / Black Ink	SV24KN



## • Ribbon tapes

Tape length: 5m Size: 12mm

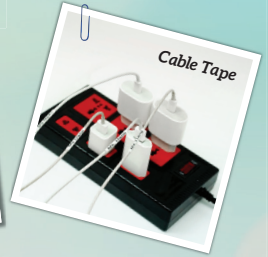


Package: 5/120 pcs  
(inner/outer)

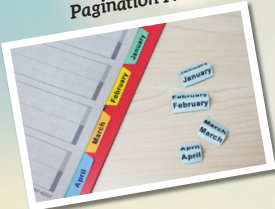
Xin Chào  
Thank you!!  
Thân tặng  
Cảm ơn!!

## Applying Tepra Pro Tapes to practice

Tape 50mm



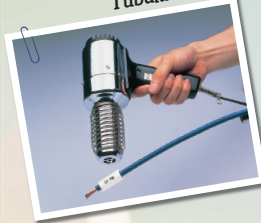
Pagination Note Tape




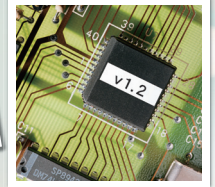
Tight Adhesive Tape



Tubular Tape



Heat Resistance Tape 



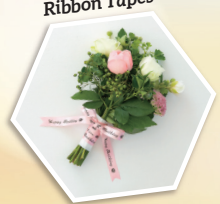
Outdoor Tape



Red Text Tape



Ribbon Tapes





# Label Printer Tepra Lite LR5E

Item code	Color	Dimension (WxDxH) mm	Weight
LR5E	Blue	90 x 115 x 37	195g

**697**  
ICONS & SYMBOLS



**49** Frames



**7** Fonts

Gothic	ABC123	Cute	<i>ABC123</i>
Helvetica	ABC123	Typewriter	ABC123
Handwriting	ABC123	Graffiti	ABC123
Antique	<i>ABC123</i>		

**4** Text Sizes



Type      Print      Cut

# Label Printer Tepra Lite LR20E

Item code	Color	Dimension (WxDxH) mm	Weight
LR20E	Red	97 x 107 x 42	201g

**669**  
ICONS & SYMBOLS



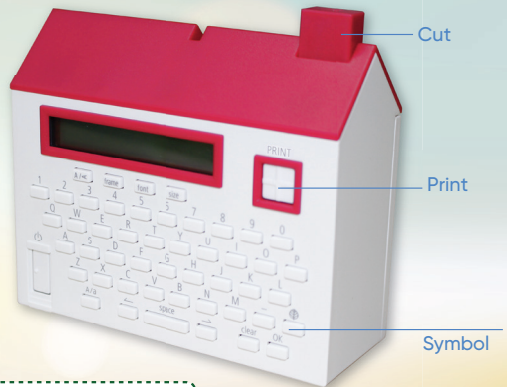
**36** Frames



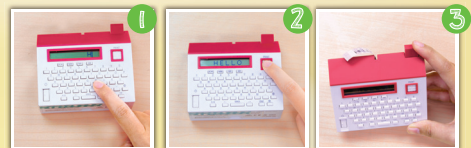
**7** Fonts

Gothic	ABC123	Elegant	<i>ABC123</i>
Handwriting	ABC123	Classic	ABC123
Slim	ABC123	Typewriter	ABC123
Sweet	ABC123		

**4** Text Sizes



Power: 4 AAA batteries



Type      Print      Cut

# Label Printer Tepra Lite LR30GS



Power

Cutting button



Bluetooth connection

Led Light

Tape Cover

Power:  
4 AAA batteries



Item code	Color	Dimension (WxDxH) mm	Weight
LR30GS	White	71 x 46 x 76	130g <sup>(*)</sup>

<sup>(\*)</sup> Excluding batteries and tape

## Various Symbols and Frames



## EASY TO USE

### Step 1

Log in to the Tepra Lite App and click Create Label

### Step 2

Click New Text (Import content, Emoji or Frame to label)

### Step 3

Click Print. Wait for it to complete and Create a label. Click cut label

## VARIOUS FONTS

TEPRA Lite LR30GS TEPRA Lite LR30GS TEPRA Lite LR30GS TEPRA Lite LR30GS  
TEPRA Lite LR30GS TEPRA Lite LR30GS Tepra Lite LR30GS TEPRA Lite LR30GS

## Prominent Features

Tepra Lite software interface change according to phone language

Printing in your phone



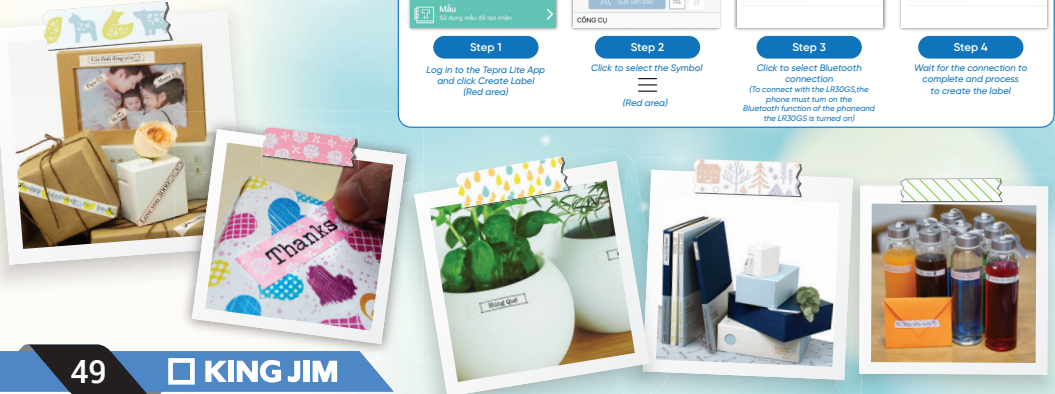
## Bluetooth connection guide

**Step 1**  
Log in to the Tepra Lite App and click Create Label (Red area)

**Step 2**  
Click to select the Symbol (Red area)

**Step 3**  
Click to select Bluetooth connection (To connect with the LR30GS, the phone must turn on the Bluetooth function of the phone and the LR30GS is turned on)

**Step 4**  
Wait for the connection to complete and process to create the label



# Lite Tape

15mm

LP15Y Yellow	LP15G Green	LP15B Blue	LP15S White	LP15P Pink
-----------------	----------------	---------------	----------------	---------------

# Coharu Film

11mm 13mm 15mm

15mm: TPT15-006 11mm: TPT11-006 White	15mm: TPT15-007 11mm: TPT11-007 Smoky Blue	15mm: TPT15-008 11mm: TPT11-008 Grege	15mm: TPT15-012 11mm: TPT11-012 Smoky pink	15mm: TPT15-013 11mm: TPT11-013 Smoky yellow	15mm: TPT15-014 11mm: TPT11-014 Smoky green
15mm: TPT15-001 animal	15mm: TPT15-002 bouquet	15mm: TPT15-003 window	15mm: TPT15-004 check red	15mm: TPT15-005 craft gray	15mm: TPT15-010 bloom
15mm: TPT15-011 cafe	11mm: TPT11-001 bird	11mm: TPT11-002 forest	11mm: TPT11-003 rainy dot	11mm: TPT11-004 Stripe green	11mm: TPT11-005 craft beige
11mm: TPT11-009 Clear	13mm: TPT13C-001 swan	13mm: TPT13C-002 tyrolean flower			

## Applying Tepra Lite Into Our Life



*Tepra Lite Unleash your creativity*

### FOR KITCHEN



### FOR BATHROOM



### FOR GIFT



### FOR DOCUMENT



Made Smart, Made Easy!



# TETTE Automatic Hand Sanitizer Dispenser

## SPECIFICATION

Item Code	TE1000
Color	White
Volume (ml)	1000ml
Weight (gram)	Approx 350g (exclude tray, liquid & batteries)
Dimension (WxDxH)	120 x 212 x 236mm (include tray)
Power	4 AA Alkaline Batteries (exclude in package)
Material	ABS plastic, PET



Led indicator

# tette



Improved injector



Suitable for most of commercial liquid disinfectant



Transparent design



Easy to replace battery



Suitable to put in many places restaurants, hotels, School, restaurant, office, ...



School



Hospital



Restaurant



Hotel



Office



Shopping Mall



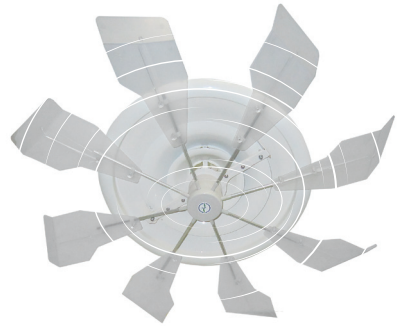
Home



Airport



Use for air vent cover (large size)



Use for air vent cover (small size)



950mmx950mm (Square)



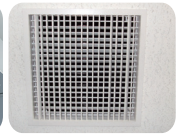
1,100mm~1,700mmx950mm (Rectangle)



Round air vent



Square air vent



Egg crate air vent

Product name	Hybrid Fan
Model	HBF-FJRCW
Dimension	Diameter: 1100 mm Height: 102 mm
Diameter range	900 mm ~ 1100 mm
Main structural components	Blade brackets: Aluminum Blades, bottom cover: Plastic Hook set, main body, bolts, screws: Steel
Weight	Main components ≈ 795 g Hook set ≈ 240 g
Compatible air vent cover	Air vent cover (Large size)
Package	1/10 package Inner/outer
Color of blades	Clear

Product name	Hybrid Fan
Model	HBF-SJRCW
Dimension	Diameter: 1100 mm Height: 102 mm
Diameter range	700 mm ~ 900 mm
Main structural components	Blade brackets: Aluminum Blades, bottom cover: Plastic Hook set, main body, bolts, screws: Steel
Weight	Main components ≈ 680 g Hook set ≈ 575 g
Compatible air vent cover	Air vent cover (Small size)
Package	1/10 package Inner/outer
Color of blades	Clear

## USING THE HYBRID FAN EFFECTIVELY

Hybrid fan is rotated by the air flow from the air-conditioner, not use electricity

Hybrid fan makes the air circulation in a room equable, which does not focus at the same place

Avoid direct contact with the air flow of air-conditioner for a long time

Using Hybrid fan helps to reduce the amount of electricity consumed and CO<sub>2</sub> emissions



## KING JIM (VIETNAM)'S OVERSEAS DISTRIBUTORS



SINGAPORE



CAMBODIA



AUSTRALIA



KOREA



THAILAND



MALAYSIA



MYANMAR



PHILIPPINES  
(OEM)

## KING JIM (VIETNAM)'S DOMESTIC DISTRIBUTION SYSTEM



## DISTRIBUTOR INFORMATION

- Distributors
- Dealers

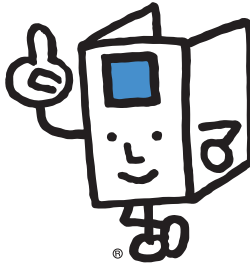






**KING JIM (VIETNAM) CO., LTD.**

*The best solution for your office*



### **REPRESENTATIVE OFFICE**



SAI GON RIVERSIDE OFFICE CENTER

Room 906, 9<sup>th</sup> floor, 2A-4A Ton Duc Thang Str., Dist. 1, HCMC



(+84)-28-3939-3922



(+84)-28-3939-3923

@customer@kingjim.com.vn



www.kingjim.com.vn



/KingJimVietNam

### **FACTORY**



Lot D-4A-CN & D-4C-CN,

My Phuoc Industrial Park 3, Thoi Hoa Ward, Ben Cat Town

Binh Duong Province, Vietnam